

The background features a vibrant blue gradient. At the bottom, there is a white silhouette of a city skyline with various building shapes. Scattered throughout the sky are several light blue, stylized clouds of different sizes and shapes.

**Let's travel
May 17th**

Today's class

Objective



Recognize celebrations around the world to express feelings

Rules

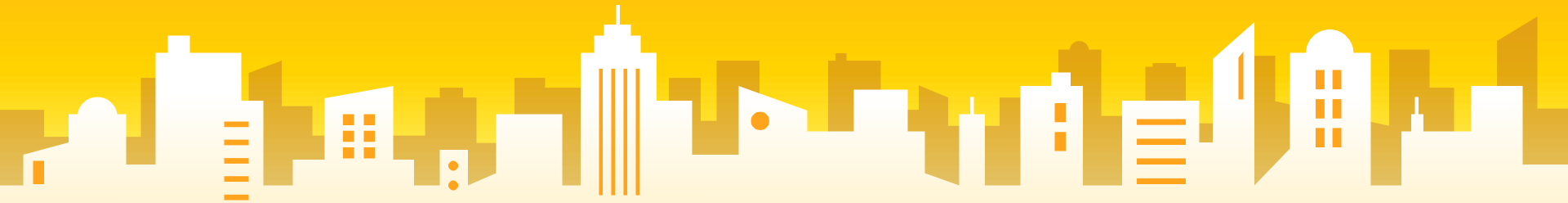
- 1.- Turn on your camera
- 2.- Wait for your turn to talk
- 3.- Use the chat only for questions
- 4.- Participate and talk in English

Today's menu

- 1.- Celebrations
- 2.- Reading
- 3.- Big concept
- 4.- Final Activity
- 5.- Closure

1. Celebrations

Look  at the images
Guess the country





“

*Can you guess where do people
have that celebration?*

- a) Spain*
- b) Italy*
- c) United States*

“

*Carnival of Venice, in Italy. This
carnival lasts approximately 10 days*





“

*Can you guess where do people
have that celebration?*

- a) Spain*
- b) United States*
- c) Portugal*

“

Agitágueda Festival, Portugal. Is an art festival ,which includes performances, concerts, and other kinds of arts expressions.





“

*Can you guess where do people
have that celebration?*

- a) Brazil*
- b) Colombia*
- c) Argentina*

“

The Carnival of Rio de Janeiro is from Brazil. People can see the parades, and they also dance the samba.





“

*Can you guess where do people
have that celebration?*

- a) Japan*
- b) China*
- c) England*



“

Fuji Shibazakura Festival is an annual flower festival in Japan. Shibazakura is the flower you see in the pictures.





“

*Can you guess where do people
have that celebration?*

- a) Japan*
- b) Thailand*
- c) South Korea*



“

Yee Peng is a festival unique to northern Thailand which is celebrated on the full moon of the 12th month of the Thai lunar calendar (usually in November).

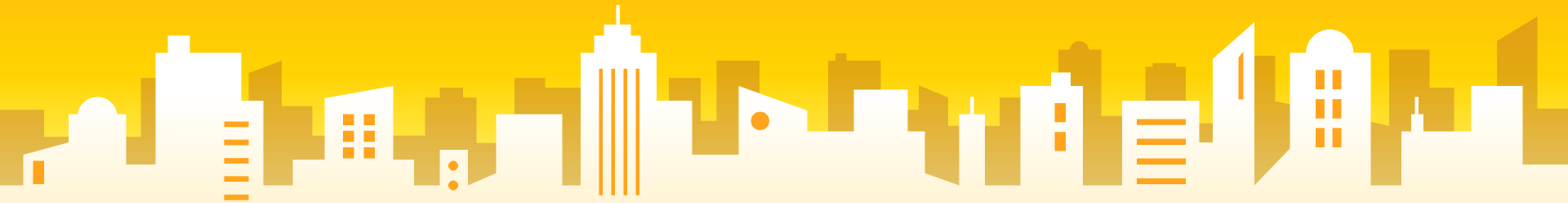




2.

Reading comprehension

Read the following text and answer the questions



Celebrations

Every year in February, there is the Carnival of Rio de Janeiro in Brazil. The streets are full of parades and people dancing the samba. People feel very enthusiastic about this event. In the other part of the world, also in February, there is another carnival. This is the carnival of Venice. People wear beautiful masks to celebrate this event.

In Japan, during April, another festival starts. The Fuji Shibazakura Festival is to celebrate and admire nature. People who visit the place feel very peaceful looking at the landscape and shibazakura flower.

During July, we move on to Portugal, to the Agitágueda Festival. This is an art festival, where people can see shows and other types of art expressions. People feel very excited to see what artists are going to present on the streets.

Finally, in October, there is the Yee Peng festival in Thailand. People feel very nervous because they have to turn on the lanterns to celebrate a new start in their lives.

Answer the following questions

- 1.- What are the celebrations that occur in February?
- 2.- Why people go to the Fuji Shibazakura Festival?
- 3.- What is the name of the art festival? Agitágueda Festival.
- 4.- In which country people celebrate this art festival?
Portugal
- 5.- Where do people celebrate the Yee Peng festival? Thailand

Answer the following questions

1.- What are the celebrations that occur in February?

Carnival of Rio de Janeiro and Carnival of Venice

2.- Why people go to the Fuji Shibazakura Festival?

To celebrate and admire nature

3.- What is the name of the art festival?

4.- In which country people celebrate this art festival?

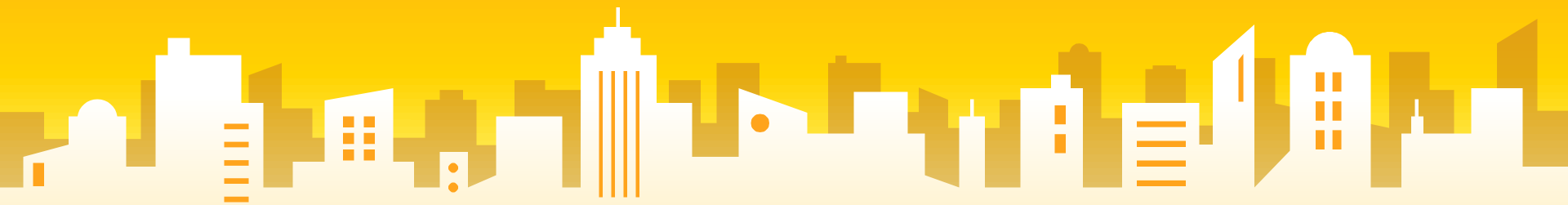
5.- Where do people celebrate the Yee Peng festival?



3.

Big concept

Adjectives to express feelings



Celebrations

Every year in February, there is the Carnival of Rio de Janeiro in Brazil. The streets are full of parades and people dancing the samba. People feel very **enthusiastic** about this event. In the other part of the world, also in February, there is another carnival. This is the carnival of Venice. People wear beautiful masks to celebrate this event.

In Japan, during April, another festival starts. The Fuji Shibazakura Festival is to celebrate and admire nature. People who visit the place feel very **peaceful** looking at the landscape and shibazakura flower.

During July, we move on to Portugal, to the Agitágueda Festival. This is an art festival, where people can see shows and other types of art expressions. People feel very **excited** to see what artists are going to present on the streets.

Finally, in October, there is the Yee Peng festival in Thailand. People feel very **nervous** because they have to turn on the lanterns to celebrate a new start in their lives.

Adjectives to express feelings



Use → To tell how we feel

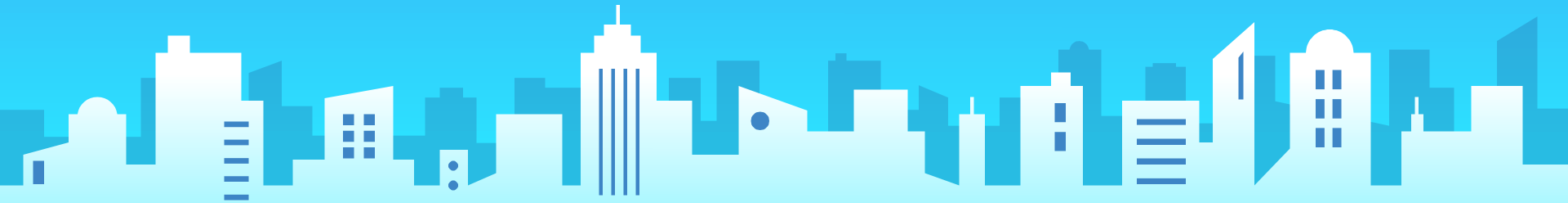
I feel + _____

1.- Enthusiastic

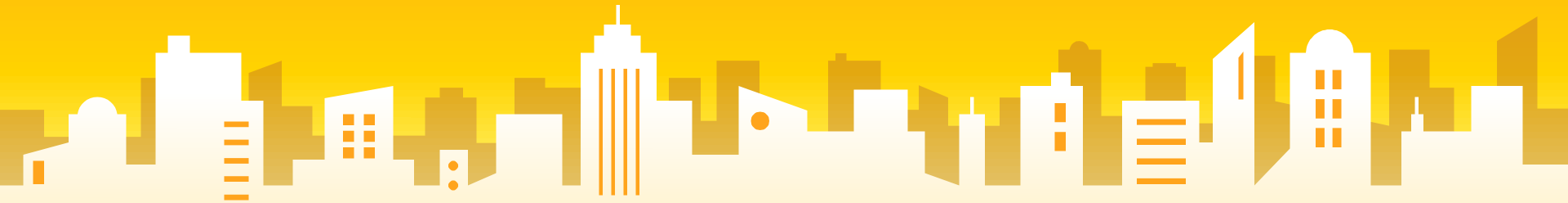
2.- Nervous

3.- Peaceful

4.- Excited



4. Final activity

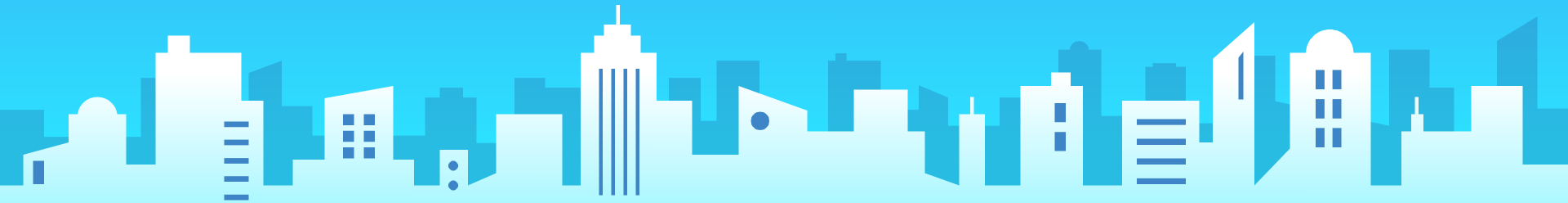


Answer the following questions

1.- What celebration calls your attention?

2.- How do you feel about that celebration?

I feel _____



“

1.- *Did we recognize celebrations
around the world?*

2.- *Did we express feelings?*



Thanks!

Any questions?

cmaliqueo@secst.cl

