

LICEO BICENTENARIO SAN FRANCISCO

HABILIDADES COMPRESIÓN LECTORA

PROF. PAULINA SANHUEZA - ED. DIFERENCIAL BELÉN RUIZ.

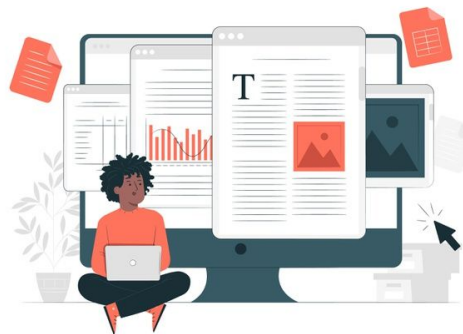




**¿QUÈ EXPRESA EL HABLANTE
LÍRICO?**



TEMÀTICA



ASOCIACIÓ





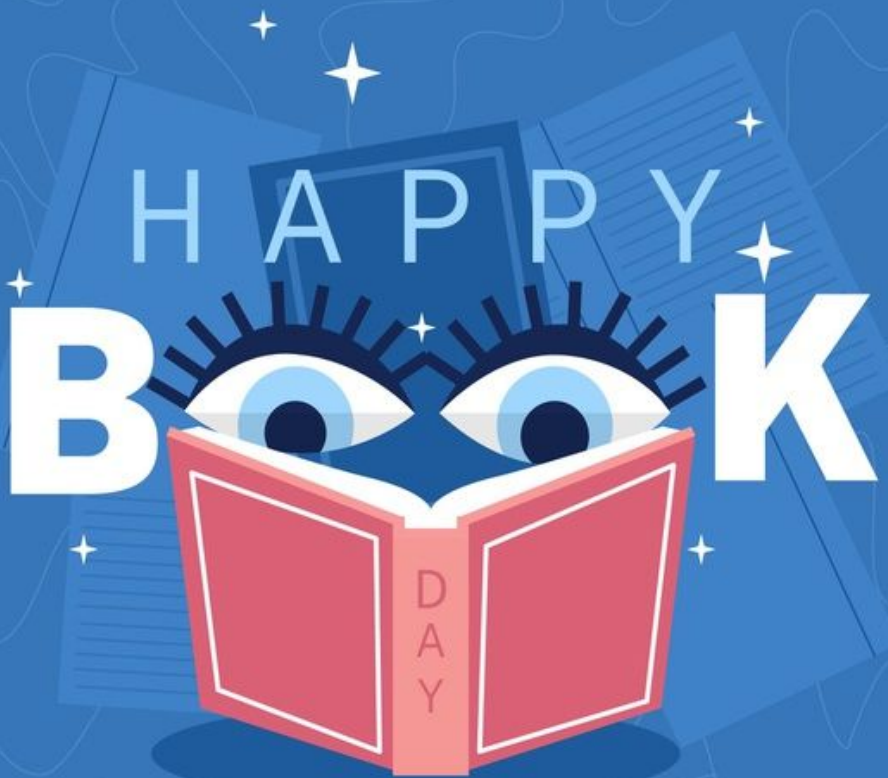


FICHA Nº 2

**HABRIAN MAS ASTRONAUTAS
QUE ARENAS EN EL MAR**

*Wiloc
Music*

clideo.com



FICHA №3

LEONARDO DI CAPRIO DISCURSO



SODA ESTEREO - MUSICA LIGERA



The background of the image is a dark, monochromatic blue. It features several silhouettes of human hands raised in the air, some with fingers spread, suggesting a crowd or a group of people. The lighting is soft, creating a hazy, atmospheric effect. The text is centered in the middle of the frame.

***ELLA DURMIÓ AL
CALOR DE LAS MASAS***

Twenty Four

clideo.com

TRAILER PELÍCULA

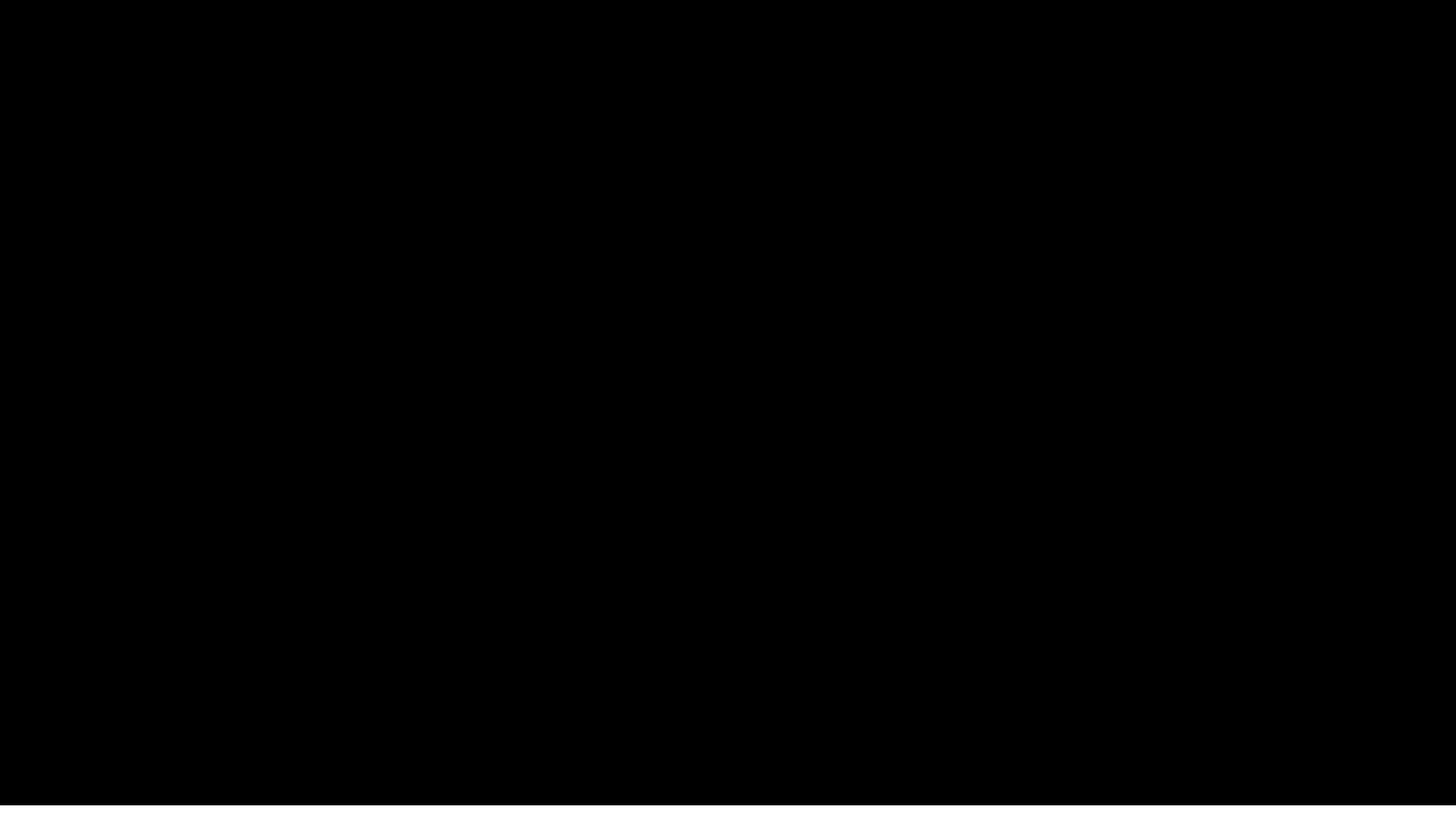


FICHA Nº3




ARRANCA CORAZONES ATAQUE 77





La renga - rebelde



Shakira- ciega, sorda , muda

